

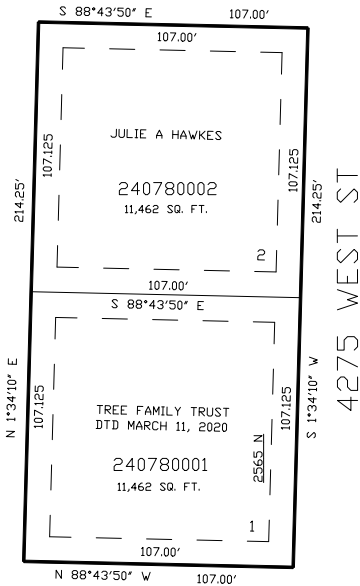
PART OF THE N.W. 1/4 OF SECTION 33, T.7N., R.2W., S.L.B. & M.
ED MCBRIDE SUBDIVISION

TAXING UNIT: 21

WEBER COUNTY
SCALE 1" = 40'

SEE PAGE 37

2575 NORTH ST



SEE PAGE 37

SEE PAGE 37

SEE PAGE 37

10' UTILITY & DRAINAGE EASEMENTS EACH
SIDE OF PROPERTY LINES AS INDICATED
BY DASHED LINES EXCEPT AS OTHERWISE
SHOWN.

FOR COMPLETE ENG DATA SEE
ORIGINAL DEDICATION PLAT IN
BOOK 48, PAGE 100 OF RECORDS.